



Clwb Hwyllo

PWLLHELI

Sailing Club



www.pwllhelisailingclub.co.uk

+44 (0)1758 613343



North Wales

The Sailing Waters around Pwllheli are amongst the best in the UK. You will find in Cardigan Bay weak tidal streams and the race area is open to the prevailing winds. The Llyn Peninsula, Snowdon and the Welsh Mountain provide a magnificent backdrop.





Championships Record

Sailing Events which have been held in Cardigan Bay include the National BT Matchracing Finals, the Optimist Nationals, Firefly Nationals, Hornet Nationals and the J24 World and European Championships, GP14's Nationals, Topper Nationals, Scorpions Nationals, Laser 2 Worlds, Osprey Nationals, Cadets Nationals/Worlds, Flying 15's Nationals, RS Championship, One Ton Cup/ IC45 Worlds, 1720's Europeans.





Pwllheli Sailing Club

Pwllheli Sailing Club is located in the marina complex at Hafan Pwllheli. The Club is a modern building about 140 meters from the pontoons and has full catering facilities, changing rooms, showers, meeting and protest rooms. It is normally a short sail from the launching area to the race course. Launching will be from a wide sheltered beach.





Facilities

Marina space for the race management and safety boats

Parking space for over 250 boats

Fresh water hoses to wash boats after each race

Free parking for cars and Trailer Park

Clubhouse for shore focal point

Safe beach access to launch and recover dinghy fleet

Additional covered space next to clubhouse with

marquee to be used for briefings

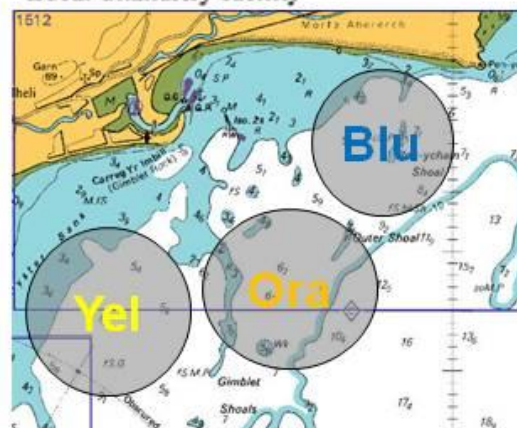
socials and general covered relaxation area

Changing rooms and hot showers

Wi-Fi

PA system

Local Chandlery facility



Travel

Pwllheli is located on the Llyn peninsula in north-west Wales. It is connected by A class roads to the north and east. It is 48 km from the A55 (Euroroute 22).

The nearest international airports are at Manchester (189 km) and Liverpool (176 km)
Pwllheli is situated on the Cambrian Coast railway with its western terminus 1 km from the facility. The North Coast mainline is accessed at Bangor 48 km away.
The nearest port is Holyhead (78 km).



Snowdonia Mountains and Coast

Snowdonia is the main adventure destination in the British Isles for outdoor activities. Climbing, hill walking, mountain biking, golfing - whatever you look for in an adventure holiday, you will find it here.

Contact the local Tourist Information Centre for help with booking your accommodation, information on places to visit, places to eat, activities attractions and local events

Pwllheli Tourist Information Centre 01758 613000
www.visitsnowdonia.info